

# E300 LC



JOHN DEERE





# Quality built. Known worldwide.

John Deere has been building high-quality products for 175 years. Our construction equipment is respected around the world for its outstanding uptime, productivity, and low daily operating costs. Built with state-of-the-art tools in a world-class manufacturing plant, our E300 LC is a productive favorite. Its rugged Deere PowerTech engine delivers dependable power and superb fuel efficiency, so you can move more material on less fuel. Customer-inspired advantages include an intuitive LCD monitor with onboard display to track and record fuel consumption, ultra-reliable solid-state electronics, and simplified maintenance. With its exceptional durability, performance, and ease of operation, the E300 LC delivers the quality and performance you'd expect from an excavator engineered in the United States and produced globally as part of the John Deere brand.

Specifications	
Net rated power	159 kW at 2,000 rpm
Operating weight	30 296 kg w/ 600-mm triple-grouser shoes
Maximum digging depth	7235 mm
Arm digging force	145.0 kN
Bucket digging force	202.3 kN

With a wide expanse of front glass, the E300 LC delivers excellent all-around visibility with clear sightlines.

Keyless-start codes programmable for each operator help machine owners track performance.

Extended engine- and hydraulic-oil service intervals increase uptime and reduce daily operating costs.

Wide-open ground-level service access, grouped service points, and detailed onboard diagnostics help maximize uptime and keep daily operating costs down.

An intuitive multifunction LCD monitor provides easy access to machine data and functions, including operating information, detailed onboard diagnostics, fuel consumption, and more.

# Nothing runs like a Deere, because nothing is built like one.

When you've got numerous people, pieces of equipment, and budgets relying on your excavators, you can't afford downtime. Built tough to deliver unsurpassed uptime, the E300 LC employs field-proven John Deere advantages, such as highly reliable digging structures and hydraulic, electrical, and undercarriage components. Other durability-enhancing features include wet-sleeve cylinder liners, heavy-duty cooling systems, and extended service intervals. Plus, highly trained Deere dealer parts and service personnel are fully prepared to provide the support you need to maximize uptime.

Sealed-switch module keeps out dust, moisture, and debris, for added durability.

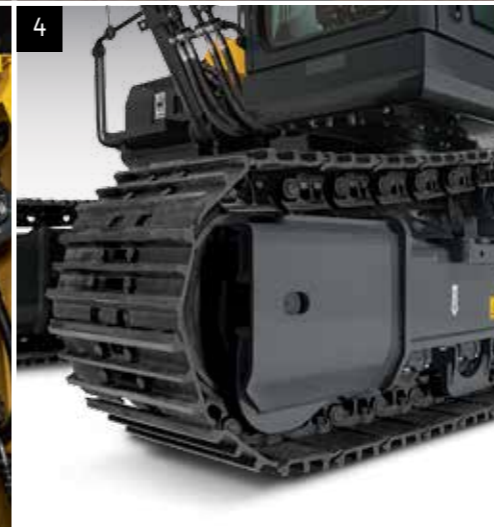
John Deere PowerTech engine delivers proven performance. Viscous fan drive provides better, more efficient engine cooling, improved fuel economy, and lower noise.

Solid-state electrical system minimizes the number of wires, mechanical relays, and unsealed connections for maximum durability and uptime.

Standard electric fuel-transfer pump automatically primes and clears the fuel system for dependable starting.

Three fuel filters and two water separators remove sediment and moisture to protect the fuel system.

Standard glow plugs improve cold-weather starting. Opt for a fuel-fired engine preheater to ensure quick starts in extreme climates.



1. Every detail was designed to increase durability, including ribs that protect the arm when curling a loaded bucket and steel collars that guard grease points in tough environments.

2. Coolant surge tank with pressurized cap maintains system pressure to protect important components. Sensors on the surge tank alert the operator when the coolant level is low.

3. Isolated side-by-side coolers are easy to clean. The air-conditioner condenser swings out, providing wide-open access to coolers.

4. Sealed and lubricated undercarriage and heavy-duty welded x-frame provide a solid, stable platform. Sloped track frame resists material buildup to decrease cleaning time.



You can choose to require a security PIN in order to start the machine to prevent theft.

Auto-idle automatically reduces engine speed when hydraulics aren't in use, to minimize noise and fuel consumption.

Four hydraulic power modes allow the operator to match productivity and fuel economy to the workload. *Low* and *Economy* modes limit engine rpm and hydraulic power to help save fuel. *Standard* delivers a balance of power, speed, and fuel economy for normal operation. *High* delivers more power and faster hydraulic response to move more material.

Auxiliary hydraulic system smoothly optimizes flow control and multifunction capabilities, to power optional rock/concrete breakers.

Sealed-switch module allows keyless start and fingertip entry of security codes and other operator settings. Keyless-start codes can be programmed for each operator, to help track performance.

# Big productivity for big tasks.

When the task demands a serious excavator to get it done, get an E300 LC. Its open-center hydraulic system is fully integrated with the John Deere PowerTech engine to deliver impressive power, control, and efficiency. Advantages such as four hydraulic power modes and three work modes deliver the right power and response for the work at hand, for maximum productivity and strong digging force. When conditions call for a little extra effort, press the pressure-boost button for the additional hydraulic power you need.

1. Four power and three work modes can be selected from the sealed-switch module to best match hydraulic flow to the attachment to help maximize productivity.

2. The hydraulic system is designed for full integration with the John Deere PowerTech engine to combine impressive performance with smooth, low-effort control.

3. When the digging gets tough, simply press the pressure-boost button on the right-hand control for additional breakout force.



# Hard work made easy.

Operators can be comfortably productive in the fully adjustable mechanical-suspension seat of an E300 LC Excavator. The spacious and quiet cab offers everything they need to do their best. A large expanse of front glass provides clear visibility to the work at hand and the jobsite all around. An intuitive multifunction LCD monitor makes it easy to access machine functions and features, including fuel consumption. Ergonomically arranged controls, automatic climate control, and ample storage help operators work harder with less effort.



The well-sealed, pressurized cab keeps out dust and minimizes noise levels to help reduce operator fatigue. Viscous mounts further isolate operators from noise as well as vibration.

Two-piece front windshield provides superb visibility and can be opened and retracted to improve airflow.

Optional cab-mounted work lights provide illumination to extend your workday beyond normal daylight hours.

Sealed-switch module allows keyless start and fingertip entry of security codes and other operator settings.

Ergonomic short-throw pilot levers provide smooth, predictable control with less movement or effort. Rotary dial allows fingertip control of engine speed.

1. Large propel pedals with toe extensions and removable levers enhance legroom.
2. Automatic temperature-control system helps keep the glass clear and the cab comfortable.
3. The standard cab includes a steel roof hatch. The premium cab features a polycarbonate hatch for additional visibility.
4. Large storage area behind the seat allows the operator to set a comfortable recline angle and still have a place for personal belongings.

5. Large LCD monitor provides intuitive access to machine data and functions, including operating information, detailed onboard diagnostics, fuel consumption, and more.



# Uncover the many ways we help minimize maintenance.

Lift open the hood to discover the numerous ways this excavator simplifies service, increases uptime, and reduces daily operating costs. Take the heavy-duty cooling system, for example. Its Viscous fan drive enables better engine cooling and reduced fuel consumption, while lowering noise levels. Grouped service points make it fast and easy to check fluid levels and grease the machine each day. Ground-level access to quick-change remote-mounted filters simplifies periodic maintenance. Plus detailed diagnostics help speed troubleshooting to further minimize downtime and costs.

Viscous fan drive helps improve engine cooling, ease fuel consumption, and lower noise levels.

Monitor provides detailed diagnostic information including live sensor readings, service codes, help screens, and more to support increased uptime.

Automatic turbo cooldown extends idle time at shutdown when the engine is hot to maximize component life.

Centralized grease points on the boom make greasing less messy and time-consuming.

Anti-slip platform surfaces on the exterior of the machine provide solid footing for maintenance.

Ground-level access to remote-mounted engine oil and fuel filters speeds periodic maintenance.

Automatic tensioning belt never needs adjusting, reducing downtime for periodic maintenance.



1. The lift-assist hood provides wide-open access to the engine.

2. Filters are quickly serviced from ground level, where it is more likely to get done. An in-cab indicator alerts the operator when the air filter is restricted.

3. Wide-open access to the hydraulic pumps is available from ground level.

4. Grouped service points make it easy to check fluid levels and grease the machine, simplifying and speeding daily maintenance. 500-hour engine oil, engine oil filter, and fuel filter service intervals decrease downtime for routine maintenance.

